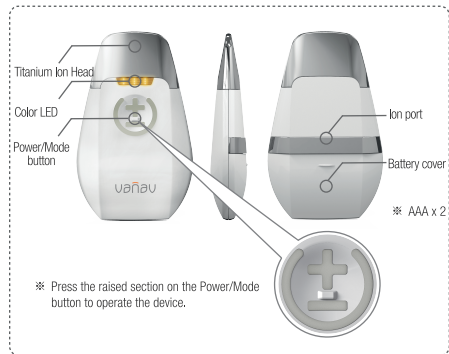


## 1. Parts & Features

### - Product Features



- ▶ The timemachine uses galvanic ions to apply a micro-current into the skin. With the micro-current and vibration about 10,000 times minute, this device helps maximize the absorption of treatments and rejuvenate your skin for a fresher, younger appearance.

## 2. How to Use

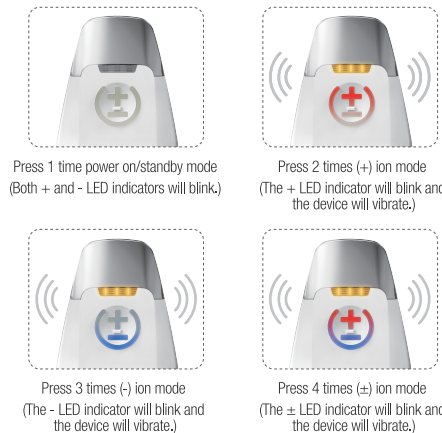
### - Basic Instructions

- ▶ Before using for the first time, open the battery cover and remove the anti-drainage slip.
- ▶ Press the raised section between "+" and "-" on the Power/Mode button.
- ▶ Press the button once to enable the standby mode, indicated by the blinking red and blue LEDs.
- ▶ Use the Power/Mode button to cycle between modes.  
Red LED for (+) ion mode / Blue LED for (-) ion mode  
When (±) ion mode is on, the LED indicator turns in both red and blue.
- ▶ Should contact both Ion Head and Ion port to operate the device.
- ▶ When using it on another person, make sure to make contact with the person with your other hand so the current can flow.
- ▶ Each mode lasts for 3 minutes and then goes into standby mode after each session (the mode will pause when the device is not in contact with the skin). Press the button once to switch to the next mode.
- ▶ The device will turn off automatically when the Power/Mode button is held for 1 second or there is no activity for 5 minutes.
- ▶ After using the device, wipe away any remaining skincare product on the Ion Head using a soft cloth or tissue.

## 2. How to Use

### - Button Operation

- You can switch between modes by pressing the Power/Mode button.



- ※ Switch between modes by pressing the Power/Mode button as described above.
- ※ Hold the Power/Mode buttons for 1 second to turn the device off.

## 2. How to Use - Instructions by Mode

### Basic Skincare

For basic skincare treatment, massage your skin using Timemachine for 5 minutes every day.

**+ Ion Mode**

**Moisturizing and nourishing**  
(e.g. essences, lotions, moisturizers, nourishing creams)

- Apply moisturizing / nourishing skincare products according to your skin condition.
- Select (+) ion mode by pressing the button.
- Gently massage your face and neck following the skin's texture.
- Operating time: 3 minutes

※ You can adjust the time depending on the absorption rate of your skin.

Supply moisture and nutrition into skin

### Décolleté Bodycare

For Décolleté bodycare, massage your skin using Timemachine for 15 minutes 3 times a week.

**+ Ion Mode**

**Bodycare products**

- Apply moisturizing / nourishing skincare products according to your skin condition.
- Select (+) ion mode by pressing the button.
- Massage from the collar bone to the chin using upward strokes about 10 times while gently pressing down on your skin.
- Massage from the front of the collar bone towards your back about 10 times.
- Massage from the bottom of your collar bone towards your chest about 15 times.
- Operating time: 3 minutes

※ You can adjust the time depending on the absorption rate.

Beautiful décolleté line care

## 2. How to Use - Instructions by Mode

### Vitamin C Skincare

For vitamin c skincare treatment, massage your skin using Timemachine for 5 minutes 2 times a week.

**- Ion Mode**

**Vitamin C products**  
(e.g. vitamin c essences, serums, toners, lotions)

- Apply vitamin c skincare product.
- Select (-) ion mode by pressing the button.
- Gently massage using Time Machine following the skin's texture.
- Operating time: 3 minutes

※ You can adjust the time depending on the absorption rate.

**TIP** It is recommended that you use Time Machine before performing other skincare steps for better absorption.

Increase the absorption of vitamin c

### Lifting Skincare

For lifting skincare treatment, massage your skin using Timemachine for 15 minutes 3 times a week.

**+ Ion Mode**

**Lifting skincare products**  
(e.g. firming essences, lifting creams)

- Apply lifting/anti-aging skincare product.
- Select (+) ion mode by pressing the button.
- Gently massage your face and neck using upward strokes following the skin's texture.
- Operating time: 3 minutes

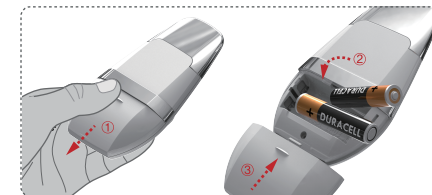
※ You can adjust the time depending on the absorption rate.

Beautiful face line care

## 2. How to Use

- Each mode lasts for 3 minutes but can be adjusted depending on the absorption rate of your skin.
- The device may not operate if your skin is too dry. If it stops vibrating, apply more product to your skin to maintain a proper moisture and oil balance.
- Adjust the frequency and duration of each session according to your skin condition.

## 3. Replacing Battery



- ① Push down the battery cover while pressing the raised part to remove the battery cover.
- ② Insert battery correctly and
- ③ replace the battery cover.

- ※ Make sure that the battery is inserted correctly before replacing the battery cover.

